

Cleveland 7.

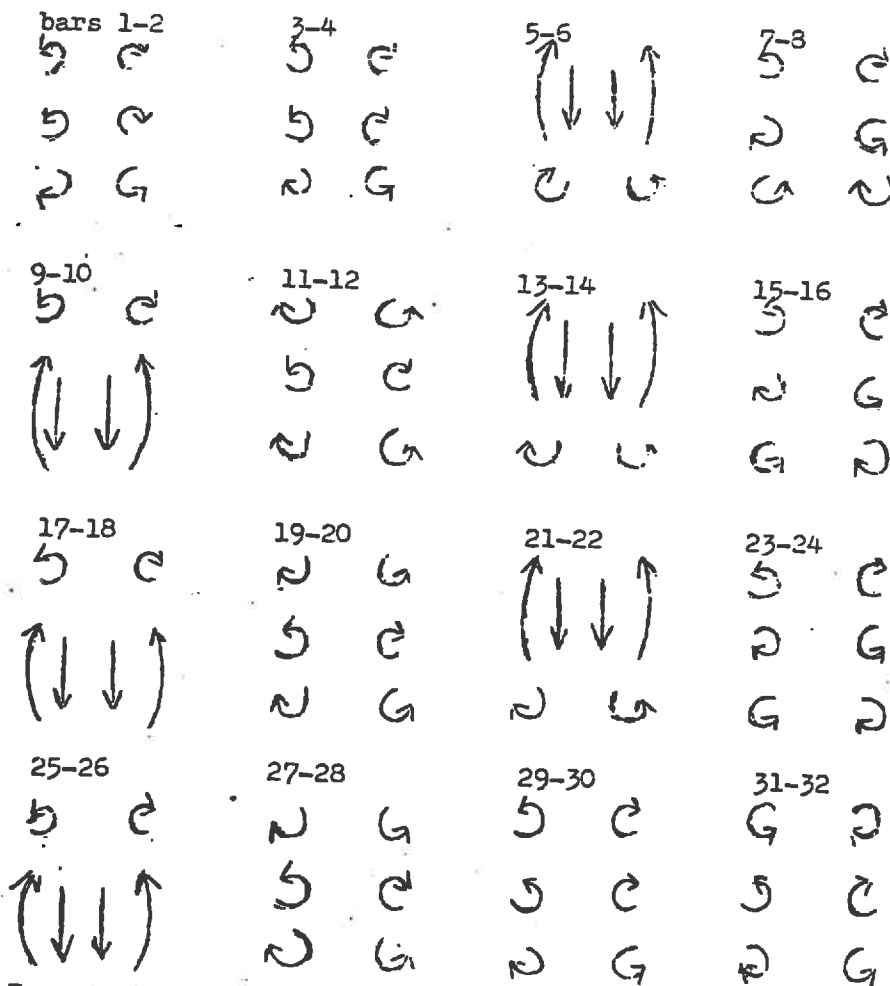
Boosbeck - as above but middle couple wove off along other diagonal; couples circulate in the same sense; top couple take first 8 steps drawing out to the left wall while waiting to come in as 3rd couple  
 Lingdale - as above but circulating in the opposite direction. Link swords on first beat. Take 14 bars travelling and 2 marking time still holding both swords.  
 Loftus - circulate same direction as North Skelton. As at Lingdale phrasing not so precise. Top couples take 3 or 4 steps to pass at start while bottom couple mark time, then travel along each straight takes about 6 steps.

THE ROLL

This movement starts from the same formation as the Fousecte. It is a hey performed by going under and over the pairs of swords. Between each change of place, each couple does one or more "rolls", that is, they turn away from each other, either up or down, on the spot, swinging their arms round in a circle, swords together. In the following diagrams the outer arrows represent going over, the inner going under. The small arrows show the direction of each roll. Each diagram shows the movement during 4 steps, vertical lines indicate every 4 bars. Top at the top.

North Skelton

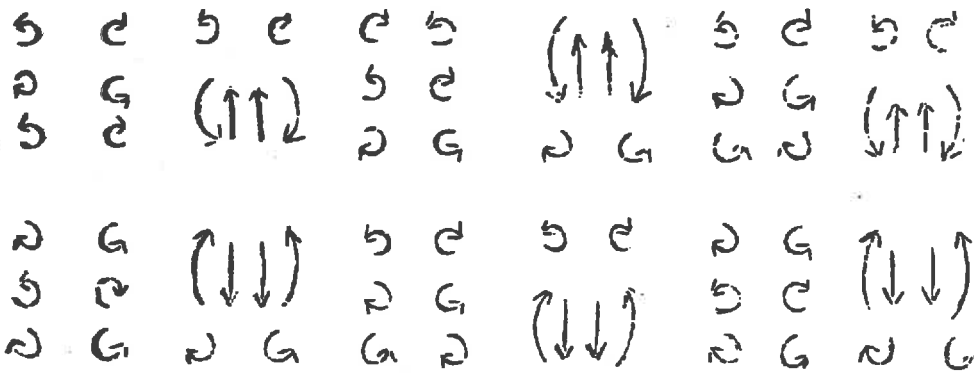
Rule - go under going down; roll in direction one is going; at ends 3 rolls, 2 in direction was going, 1 in direction to go.



Top at the top. Couple going over, on outside.

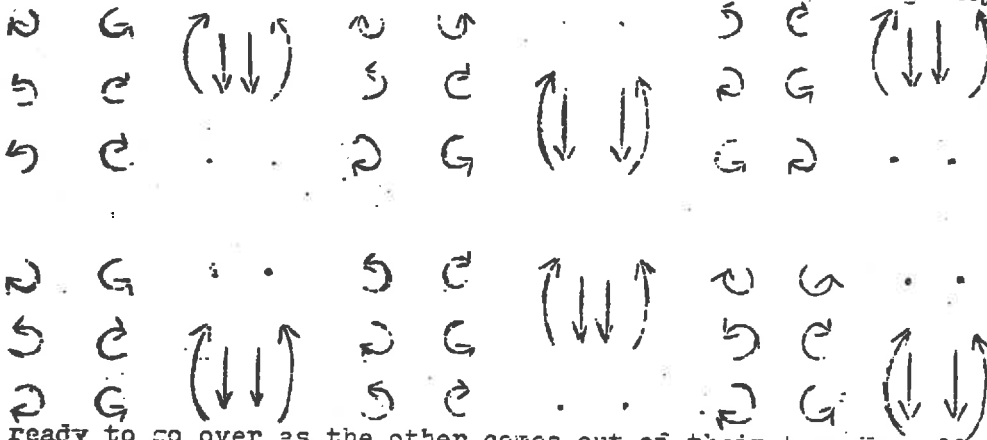
Cleveland 8.

Boosbeck.



Loftus

The odd couple at the end tend to turn a bit quicker than indicated so that they are turning while the other two are passing. Sometimes the end couple moves a bit away from the set before rolling. Because the end couple turns during the end of the other's passing they are



ready to go over as the other comes out of their turn. No roll once back to starting place.

Lingdale.

